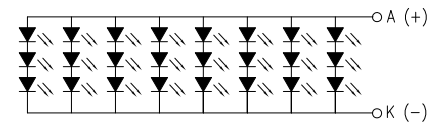
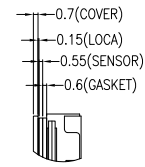
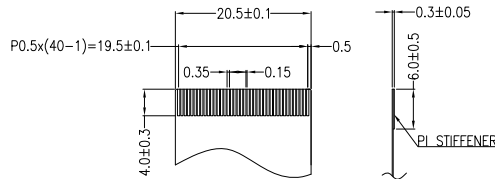
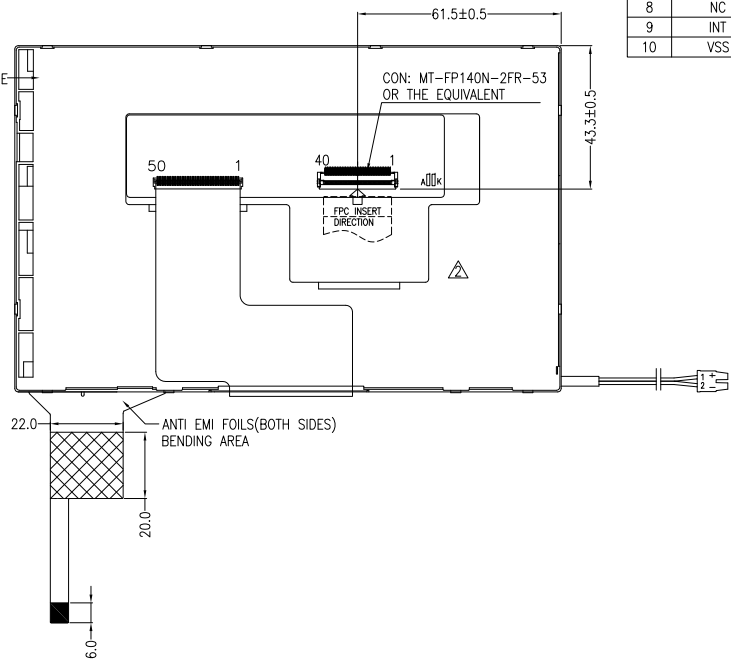
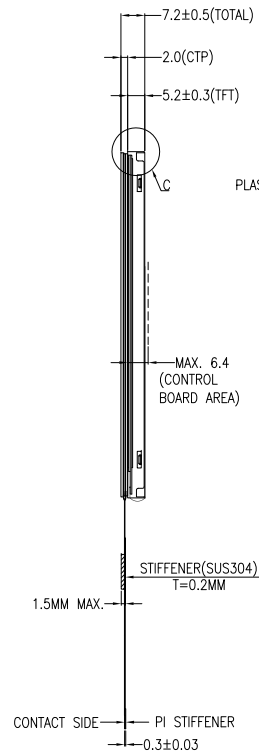
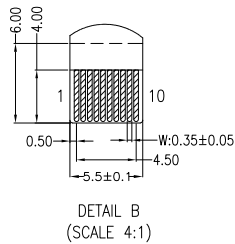
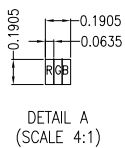
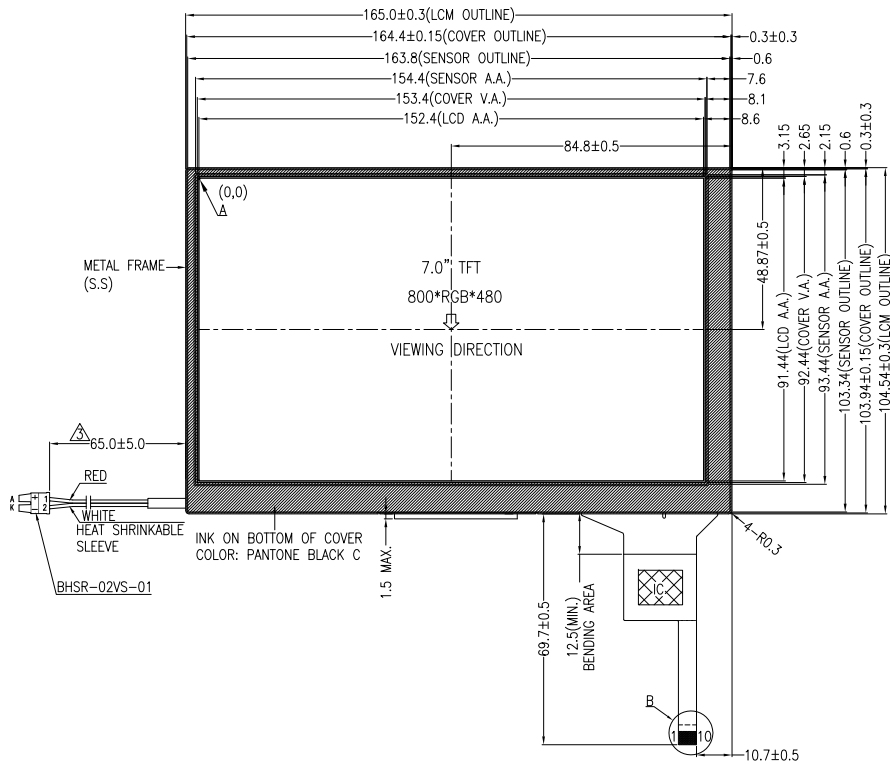


NO MECHANICAL HOUSING TO HOLD THE TFT AND THE TOUCH PANEL ON THIS PRODUCT, SO THE END USER'S MECHANICAL DESIGN MUST INCLUDE A HOUSING FOR PREVENTING THE SEPARATION OF THE TFT AND THE TOUCH PANEL.



PIN DESCRIPTION FOR CTP		PIN DESCRIPTION FOR LCM	
PIN	SYMBOL	PIN	SYMBOL
1	VSS	1	GND
2	VDD	2	GND
3	SCL	3	NC
4	NC	4	VCC
5	SDA	5	VCC
6	NC	6	VCC
7	RST	7	VCC
8	NC	8	NC
9	INT	9	DE
10	VSS	10	GND
		11	GND
		12	GND
		13	B5
		14	B4
		15	B3
		16	GND
		17	B2
		18	B1
		19	B0
		20	GND
		21	G5
		22	G4
		23	G3
		24	GND
		25	G2
		26	G1
		27	G0
		28	GND
		29	R5
		30	R4
		31	R3
		32	GND
		33	R2
		34	R1
		35	R0
		36	GND
		37	GND
		38	DCLK
		39	GND
		40	GND

NOTES FOR TFT:

1. DISPLAY TYPE: TFT, TRANSMISSIVE, NORMALLY WHITE
2. OPERATING VOLTAGE: VCC=3.3V (TYP.)
3. VIEWING DIRECTION: 12:00 O'CLOCK
4. DRIVER IC: EK79713B + EK73202A
5. BACKLIGHT: 24-CHIP WHITE LED, If=160mA, Vf=8.4V~10.2V
6. TOP POLARIZER SURFACE TREATMENT: ANTI-GLARE

NOTES FOR OTHERS:

1. OPERATING TEMP.: -20°C ~ 70°C
2. STORAGE TEMP.: -30°C ~ 80°C
3. SURFACE LUMINANCE: 425CD/M<sup>2</sup> (TYP.) WITH CTP
4. ONLY THE SINGLE LAYER AREA ON FPC IS BENDABLE AND THE MINIMUM BEND RADIUS IS 1.5MM
5. GENERAL TOLERANCE: ±0.3MM
6. ROHS COMPLIANT

NOTES FOR CTP:

1. 7.0 INCH PROJECTIVE CAPACITIVE TOUCH PANEL
2. COVER GLASS + SENSOR GLASS + FPCC
3. OPERATING VOLTAGE: VDD=3.3V
4. DRIVER IC: FT5426DQ8-003 (SMT)
5. INTERFACE: I<sup>2</sup>C
6. RESOLUTION: 800\*480
7. MULTI FINGER: UP TO 5
8. HARDNESS OF COVER SURFACE: 7H
9. FIRMWARE FILE: TBD

**Mti** MULTI-INNO TECHNOLOGY CO., LTD.

03	MODIFY THE CABLE LENGTH OF BACKLIGHT.	RITA	2022.05.18
02	MODIFY THE DESIGN OF THE PLASTIC FRAME.	CAROL	2022.03.09
01	FIRST ISSUE	CAROL	2022.02.25
VER.	REVISED DESCRIPTION	REVISER	DATE

DRAWN BY:	CAROL	2022.02.25		MODULE P/N:
CHECKED BY:			SCALE : 1/1	M10700A2T-38CP
APPROVED BY:			UNIT: mm	DESCRIPTION:
VERSION NO:	03		SHEET NO.: 1/1	TFT + CTP MODULE